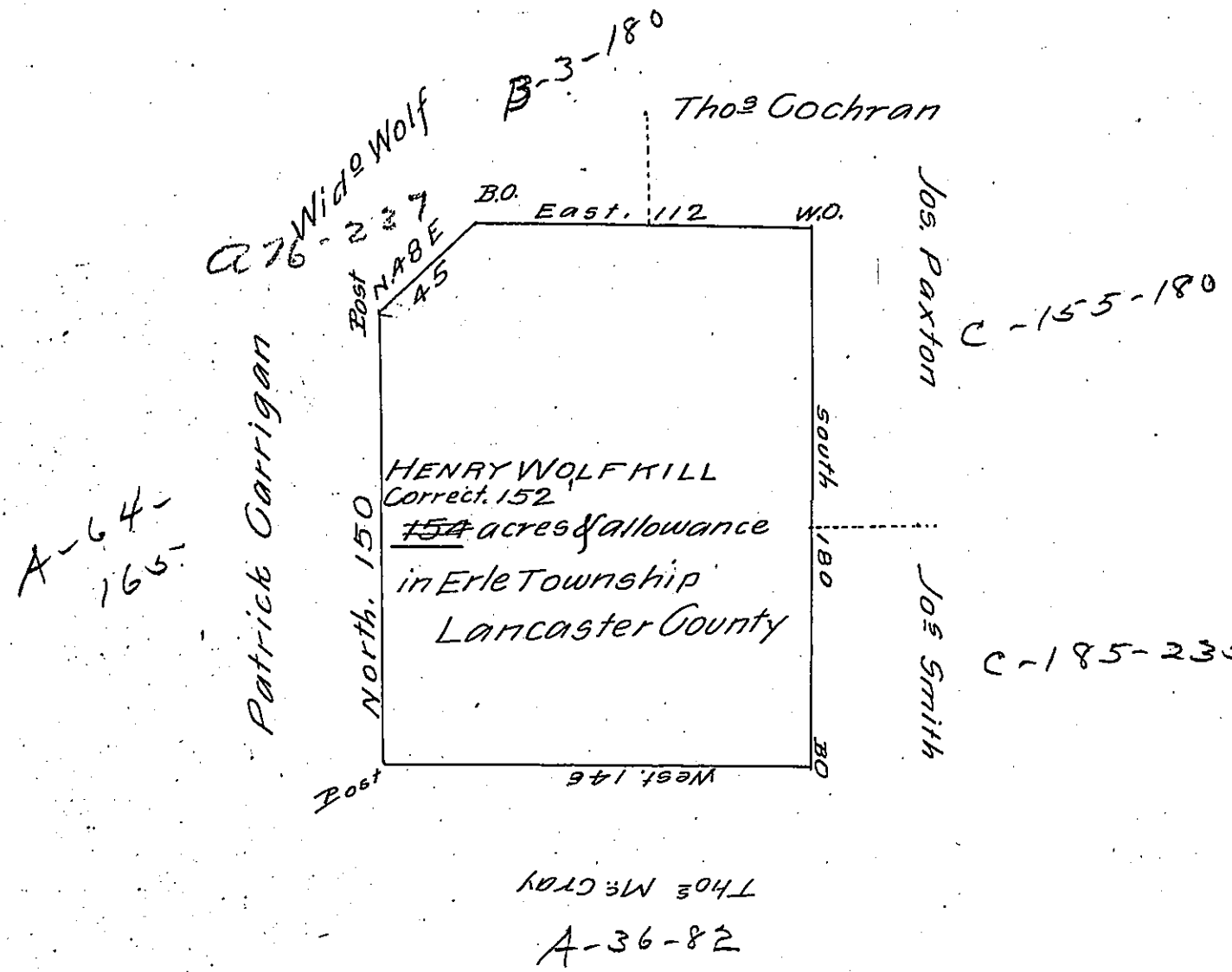


FORM No. 1.



A Draught of Henry Wolfkill's Land situate in Erle Township in the County of Lancaster Containing One hundred and fifty ^{two} ~~four~~ acres and allowance of six p Cent for roads and Highways. By Virtue of the Honble the Proprietors Warrant dated the 22^d day of October 1751 Surveyed the 14th day of December 1751

To Nich^s Scull Esq^r
Surveyor Gen^l

IN TESTIMONY that the above is a copy of the original remaining on file in the Department of Internal Affairs of Pennsylvania, made conformably to an Act of Assembly approved the 16th day of February 1833, I have hereunto set my hand and caused the Seal of said Department to be affixed at Harrisburg, this third day of MAY 1907

Isaac B. Brown
Secretary of Internal Affairs.